



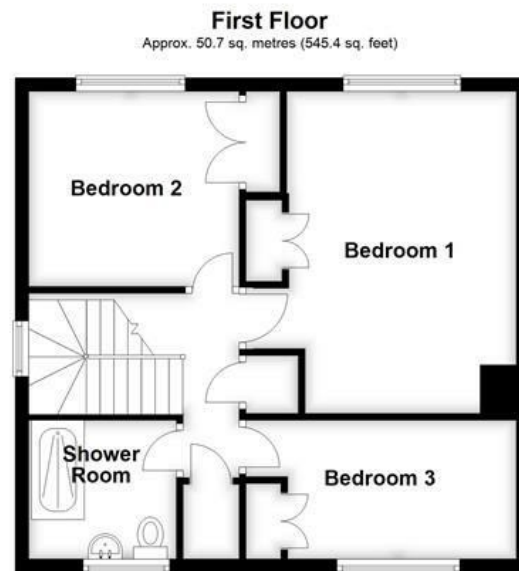
18 Milford Mill Road, Salisbury, Wiltshire, SP1 2RT

£1,400 PCM

A modern detached house forming part of a small development in the favoured Milford area of Salisbury. The property benefits from PVCU double glazing, gas fired central heating, a garden and part integral garage with views to the front across open fields. Offered to the market with no onward chain.

A well presented 3 bedroom detached house forming part of a small development in the sought after Milford area of Salisbury.

Situated on the edge of a popular small development this well presented 3 bedroom home has well proportioned accommodation comprises of entrance hallway, cloakroom, kitchen, sitting/dining room with French doors leading out onto the south facing rear garden. On the first floor there are two double bedrooms, a further single bedroom and a wet room. All the bedrooms have built-in wardrobes and the property further benefits from UPVC double glazing and gas fired central heating. To the rear is a single garage with off-road parking for two cars. Situated on the city edge within easy walking distance of the city centre, the property lies in the popular Milford suburb and offers easy access onto the A36. The city centre is also accessible via a nearby bus route. There are both primary and secondary schools (some private) in the neighbouring area of Laverstock which also has a useful convenience store. Salisbury has an excellent range of shopping, cultural and leisure facilities and a mainline railway station serving London (Waterloo).



Total area: approx. 109.0 sq. metres (1172.8 sq. feet)

Energy Efficiency Rating		
	Current	Potential
Very energy efficient - lower running costs		
(92 plus) A	<div>66</div>	<div>82</div>
(81-91) B		
(69-80) C		
(55-68) D		
(39-54) E		
(21-38) F		
(1-20) G		
Not energy efficient - higher running costs		
England & Wales		EU Directive 2002/91/EC

WHITES
Castle Chambers, 47 Castle Street,
Salisbury, Wiltshire, SP1 3SP
01722 336422
www.hwwhite.co.uk
residential-sales@hwwhite.co.uk

